



Earl Travillion Attendance Center

P.B.S.

2011-2012



P.B.S.

**E a r l T r a v i l l i o n
A t t e n d a n c e C e n t e r**

**F o r r e s t C o u n t y S c h o o l
D i s t r i c t**

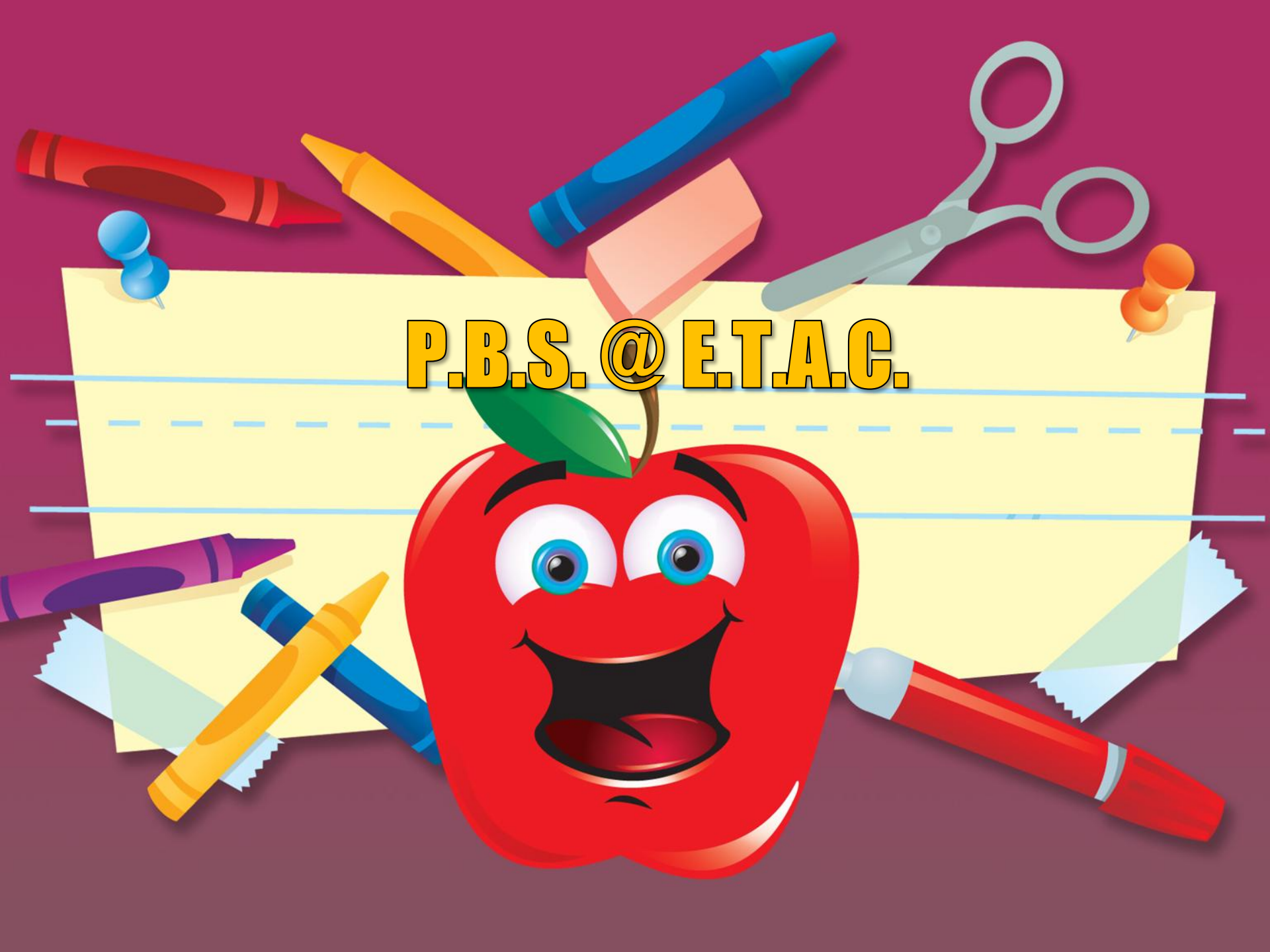
**H a t t i e s b u r g ,
M i s s i s s i p p i**

K - 6 E l e m e n t a r y S c h o o l

300 S t u d e n t s



P.B.S. @ E.T.A.C.



P.B.S Mission Statement

Our mission at Earl Travillion Attendance Center is to provide each child with a positive environment that is conducive to learning, which coincides with the mission statement of the Forrest County School District.



Establishing SWPBIS Team

Our P.B.S. team consists of 5 team members from a variety of grade levels and subject-areas and our Principal.

Current Team:

Dr. Pearl Haynes

Ashley Smith

Martha Davis

Sommer Dearman

Tara Lee

Tory Barlow

**O u r t e a m w o r k s
a l o n g w i t h o u r
s t a f f t o c r e a t e
s o l u t i o n s a n d
i n c e n t i v e s t o
i n s u r e q u a l i t y
i n s t r u c t i o n
t i m e i n t h e
c l a s s r o o m !**



Identifying School-Wide Expectations

Our original
P·B·S·team
created 5
School-Wide
Expectation
s·These
expectation
s are a guide
for positive
behavior
that
coincides
with our
specific
rules
throughout

School-Wide Expectations

- **Be Positive**
- **Be Prepared**
- **Be Safe**
- **Be Respectful**
- **Be Responsible**



Bus Rules

- Use low voices
- Follow instructions from adults
- Keep all items in backpack
- Wait quietly and patiently to unload
- Face forward and keep aisle clear
- Keep hands, feet, and objects to self
- Remain in seat
- Be silent at RR crossings
- Smile and wave silently



Special Events and Assembly Rules

- Applaud appropriately
- Be attentive
- Keep hands and feet to self
- Stay in assigned area
- Be supportive
- Be appreciative



Playground Rules



- Use appropriate language
- Only appropriate physical contact
- Rocks, sticks, and other items should remain on the ground
- Be attentive
- Play fairly
- Include everyone

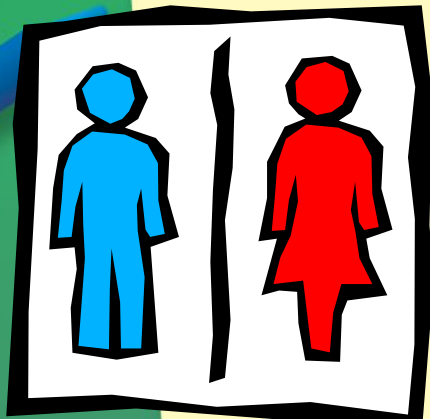


Hallway/Sidewalk Rules

- Remain quiet
- Consider other's space
- Walk in single file
- Be patient while waiting
- Keep to the right of the hallway
- Be attentive
- Smile and wave when greeting others
- Keep hands and feet to self



Restroom Rules



- Be quick and quiet
- Use supplies and equipment properly
- Use a bathroom monitor
- Keep hands and feet to self
- Leave objects and backpacks outside
- Work as a team to keep the restrooms clean



Cafeteria Rules



- Keep voices low
- Keep table and floor clean
- Face forward in line and at the table
- Keep feet on the floor
- Remain at the table until released
- Know your lunch number
- Get utensils and napkins before sitting
- Be kind and courteous



Classroom Rules

- Use a polite, appropriate voice
- Be on time
- Consider other's space
- Follow instructions of adults
- Complete all assignments
- Bring all materials and supplies to class
- Do unto others as you would have them do unto you.



Teaching Appropriate Behavior:

Lesson-Plan

Our faculty and staff are given a lesson plan for teaching our expectations, rituals/routines, rules/consequences, and appropriate behavior around campus.

Station Rotation

Teachers begin the school year guiding their students through stations on campus to address all areas of P·B·S· We also do the station rotation refresher when we



Reinforcement System


Tiger Tickets!!!

Students receive Tiger Tickets for exhibiting positive behavior. These tickets are used in the Tiger Store to purchase toys, books, snacks, etc.





O.D.R. Process

- *Teachers handle all level 1 discipline in the classroom.**
 - *If behavior escalates to level 2, then a referral is written and the student's behavior is handled by administration.**
 - *Teachers are trained to identify levels of discipline and how to handle situations in their classroom.**
- 

Faculty, Staff, and Family Involvement

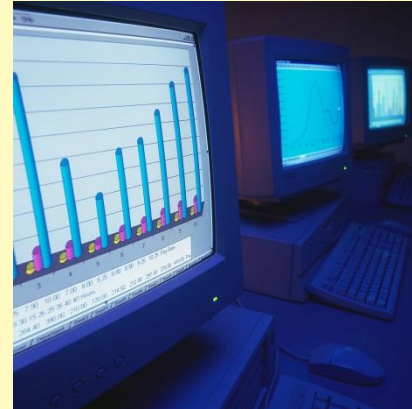
Faculty and staff at E·T·A·C are trained during staff development on the Ins-and-Outs of the P·B·S·program. The P·B·S·team uses games, station rotations, and presentations to increase buy-in. All faculty and staff actively participate in the P·B·S·program!

Parent and Family participation is



Data

At E·T·A·C., we use data to drive all of our decision making! Data is used to determine the areas with the greatest need for interventions and incentives. Data is assessed



E.T.A.C Tigers are...

Respectful

Responsible

Positive

Prepared

Safe

